

PPDBILLET.com

TC6 LOCK BLOCK  
WITH DIAL-a-GRIP

SET SCREW FLUSH TO TOP  
= 0 OR 2 BLOCK (NEUTRAL POS. IN SLOT)

BLOCK 0 LOCATIONS

BLOCK 2 LOCATIONS

SET SCREW OUT  
LONGER THEN 0 X .030

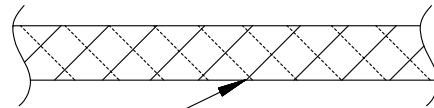
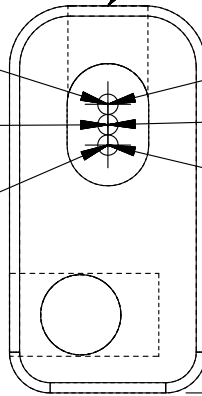
SET SCREW OUT  
= BLOCK 1

NEUTRAL = BLOCK 0

NEUTRAL = BLOCK 2

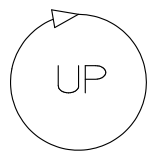
SET SCREW ALL THE WAY IN  
.020 SHORT OF BLOCK 1

SET SCREW ALL THE WAY IN  
= BLOCK 3



0.100 (2.54 MM)  
CHECK WITH FEELER GAGE  
FOR FACTORY BLOCK 0 SETTING

CHASSIS



1 TURN = .020  
(.5MM)

SCREW IN (TURN CW)  
TO RAISE BLOCK UP